

any single aid to navigation, particularly on floating aids. See U.S. Coast Guard Light List and U.S. Coast Pilot for details.

Local Notice to Mariners.

PLANE COORDINATE GRID
(based on NAD 1927)

Georgia State Grid, east zone, is indicated by dotted ticks at 16,000 foot intervals.

Cedar Hammock

CAUTION

Fixed and floating obstructions, some submerged, may exist within the magenta tinted bridge construction area. Mariners are advised to proceed with caution.

Vernonburg

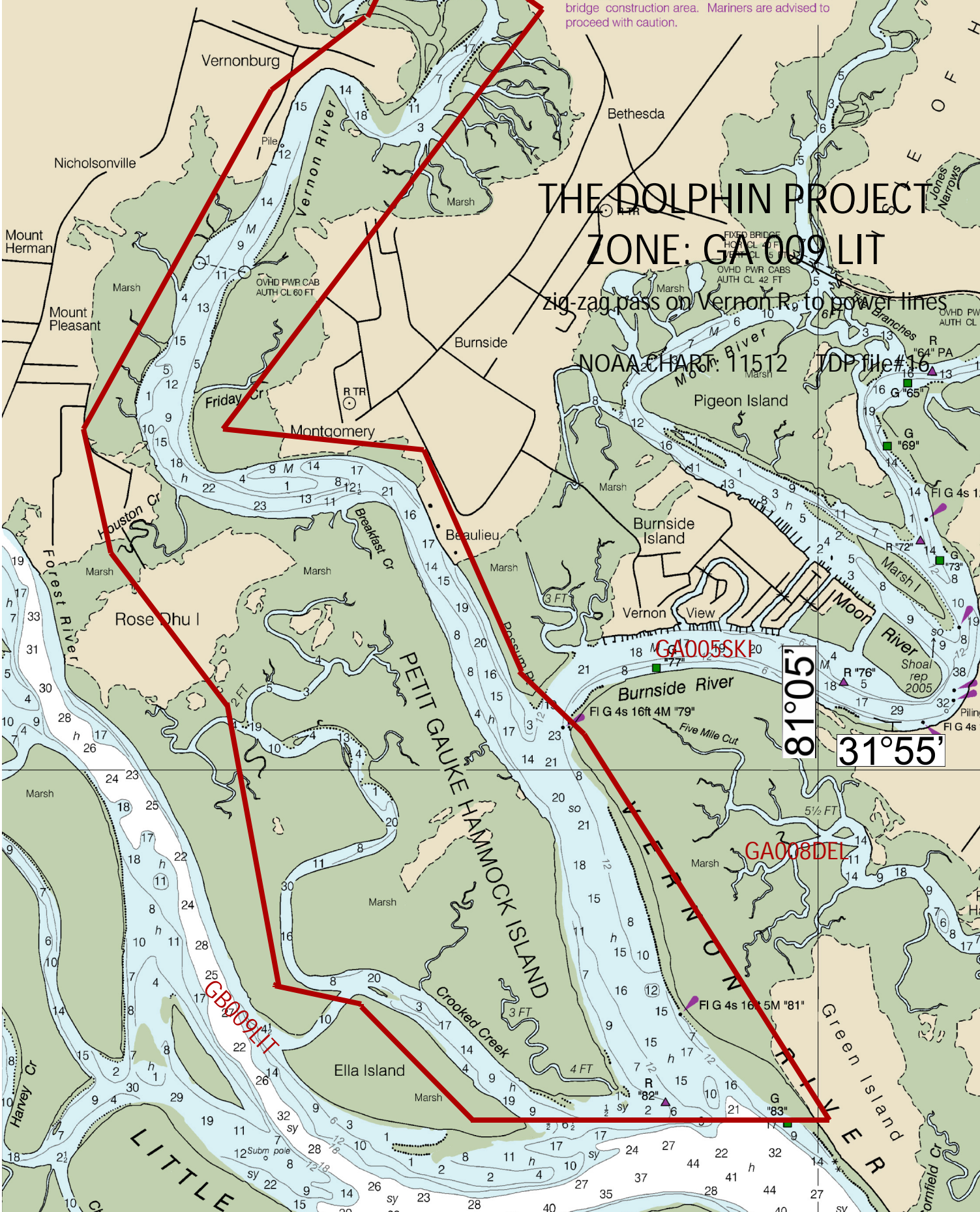
Bethesda

THE DOLPHIN PROJECT ZONE: GA 009 LIT

zig-zag pass on Vernon R. to power lines

NOAA CHART: 11512

TDP file #16



Montgomery

Burnside

NOAA CHART: 11512

TDP file #16

Houston Cr

Beaulieu

Burnside Island

Rose Ohu I

Vernon View

GA005SK

81°05'

31°05'

PETIT GAUKE HAMMOCK ISLAND

Burnside River

GA008DEL

Ella Island

Five Mile Cut

LITTLE CHARLES RIVER

Green Island

Green Island