

THE DOLPHIN PROJECT

ZONE: GA 033 SMR

NOAA Chart: 11503

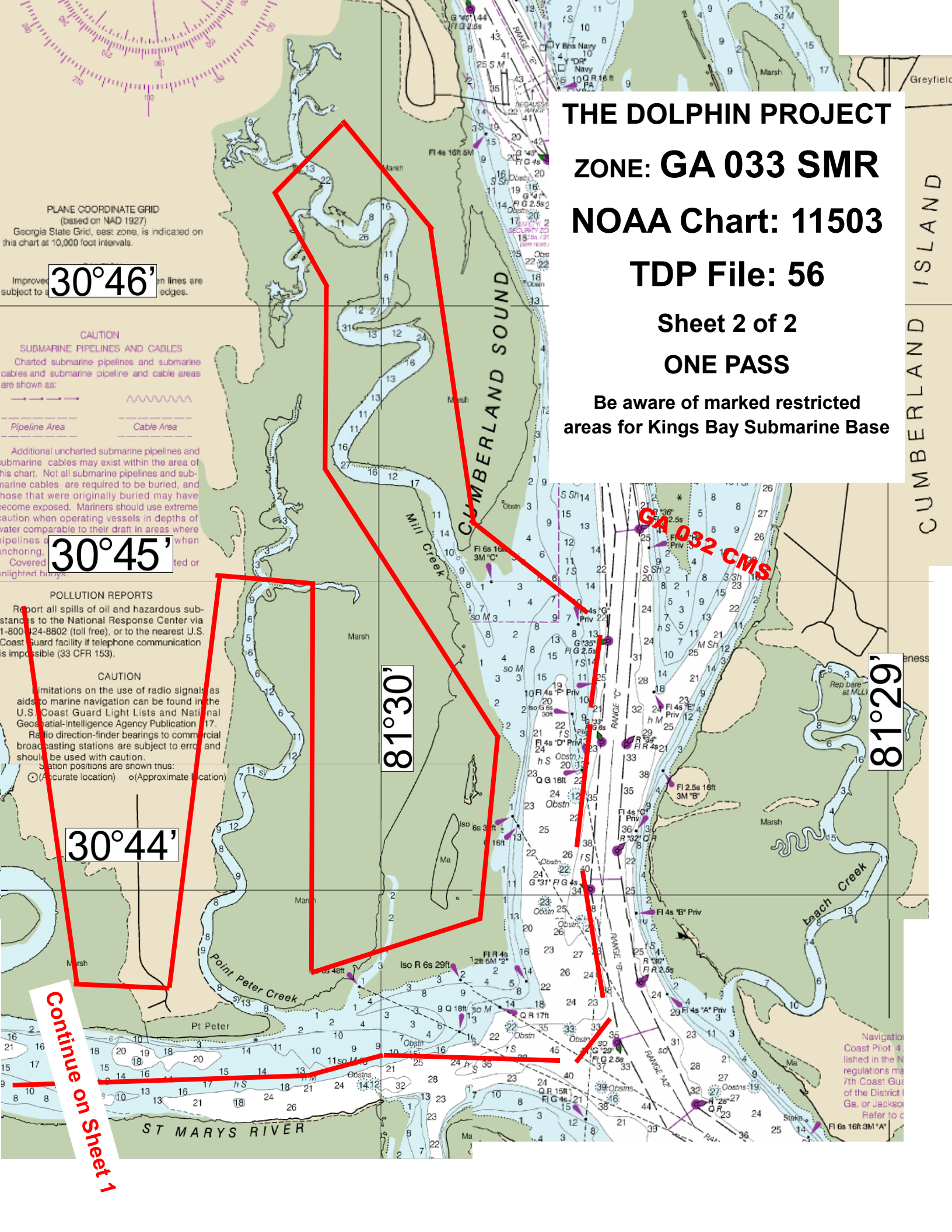
TDP File: 56

Sheet 2 of 2

ONE PASS

Be aware of marked restricted areas for Kings Bay Submarine Base

CUMBERLAND ISLAND



PLANE COORDINATE GRID
(based on NAD 1927)

Georgia State Grid, east zone, is indicated on this chart at 10,000 foot intervals.

Improved **30°46'** meridian lines are subject to 4' in edges.

CAUTION

SUBMARINE PIPELINES AND CABLES

Charted submarine pipelines and submarine cables and submarine pipeline and cable areas are shown as:



Additional uncharted submarine pipelines and submarine cables may exist within the area of this chart. Not all submarine pipelines and submarine cables are required to be buried, and those that were originally buried may have become exposed. Mariners should use extreme caution when operating vessels in depths of water comparable to their draft in areas where pipelines or cables are present. Exercise caution when anchoring, mooring, or dredging. Covered or unlighted bilgias.

Improved **30°45'** meridian lines are subject to 4' in edges.

POLLUTION REPORTS

Report all spills of oil and hazardous substances to the National Response Center via 1-800-424-8802 (toll free), or to the nearest U.S. Coast Guard facility if telephone communication is impossible (33 CFR 153).

CAUTION

Limitations on the use of radio signals as aids to marine navigation can be found in the U.S. Coast Guard Light Lists and National Geospatial-Intelligence Agency Publication 17.

Radio direction-finder bearings to commercial broadcasting stations are subject to error and should be used with caution.

Station positions are shown thus:
○ (Accurate location) ◦ (Approximate location)

Improved **30°44'** meridian lines are subject to 4' in edges.

Improved **81°30'** meridian lines are subject to 4' in edges.

Improved **81°29'** meridian lines are subject to 4' in edges.

Continue on Sheet 1

Navigation
Coast Pilot 4
lished in the N
regulations ma
7th Coast Gu
of the District
Ga. or Jackso
Refer to c